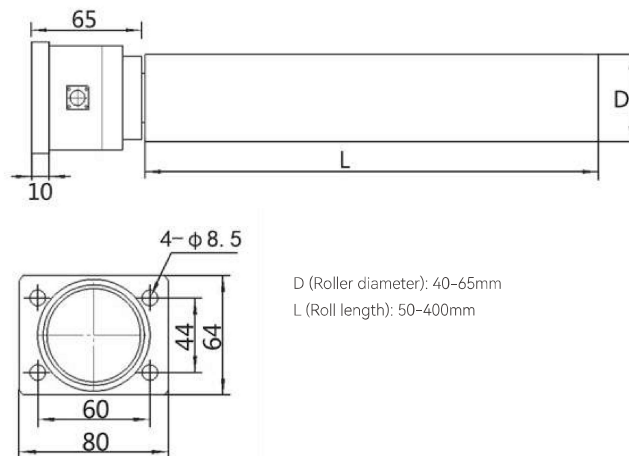


DYZL-106 Tension sensor



Product Reviews

Characteristic

The cantilever beam tension sensor is designed for the uni-lateral frame machine, and is applied in the flow extension film machine, textile, wire rod, and other industries. Enough to detect small changes in tension, and provide excellent resolution and sensitivity, its performance in industrial applications is very outstanding.

Application Area

- Tension sensor is an instrument for measuring the size of coil tension value, which is usually used in the industrial field.
- They can be used in pharmaceutical, textile, printing, packaging and other industries.

Parameters Table

Range	20-300N	Material quality	Alufer
Output sensitivity	2.0±0.1% mV/V	Impedance	350 Ω
Zero point output	±1%F.S.	Insulation resistance	≥5000M Ω /100VDC
Nolinear	0.1%F.S.	Service voltage	5-15v
Hysteresis	0.1%F.S.	Operating temperature range	-20-80°C
Repeatability	0.1%F.S.	Safe overload	150%
Creep (30 min)	0.1%F.S.	Extreme overload	200%
Temperature sensitivity drift	0.05%F.S./10°C	Cable line specifications	$\phi 5 \times 3m$
Xero point temperature drift	0.05%F.S./10°C	Cable limit tension	10kg
Response frequency	10kHz	TEDS	

Range (N)

20	50	75	100	200	300
----	----	----	-----	-----	-----