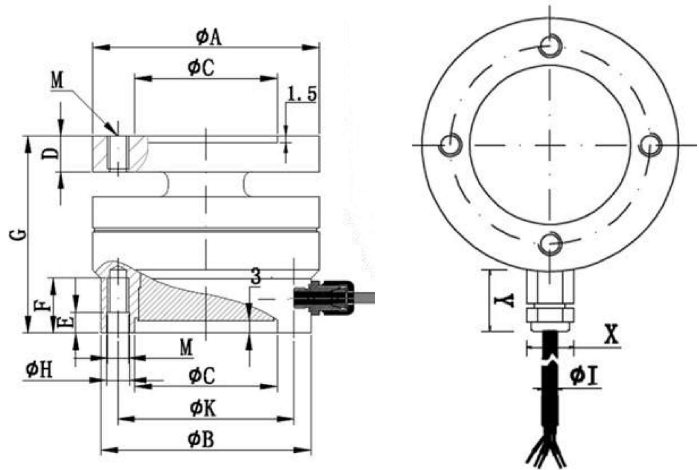


DYZ-104 Column type load cells



Product Reviews

Characteristic

This product is simple in structure, and the cost is low. The design of the sealing diaphragm changes the tedious process of supporting the shell in the past, overcomes the defect that the shell of the traditional sensor is easily damaged due to deformation, and greatly improves the sealing performance of the

sensor. Compared with the traditional column sensor, the sensor of this structure achieves relatively high accuracy in terms of linear, side resistance, torsion resistance, orientation error and so on.

Application Area

- Rail Weighbridge
- The Bucket Scale
- Platform Scale And Other Electronic Weighing Equipment

Parameters Table

| | | | |
|-------------------------------|----------------|-----------------------------|-----------------------------|
| Range | 0-100kN | Material quality | Stainless Steel/Alloy Steel |
| Output sensitivity | 2.0±10% mV/V | Impedance | 700 Ω |
| Zero point output | ±2%F.S. | Insulation resistance | ≥5000M Ω /100VDC |
| Nolinear | 0.5%F.S. | Service voltage | 10-15V |
| Hysteresis | 0.1%F.S. | Operating temperature range | -20-80°C |
| Repeatability | 0.1%F.S. | Safe overload | 120% |
| Creep (30 min) | 0.1%F.S. | Extreme overload | 150% |
| Temperature sensitivity drift | 0.1%F.S./10°C | Cable line specifications | ϕ 5x3m |
| Xero point temperature drift | 0.1%F.S./10°C | Cable limit tension | 10kg |
| Response frequency | 10kHz | TEDS | |

| Range (kN) | A | B | C | D | E | F | G | H | K | X | Y | I | J | Z | M |
|------------|----|----|----|-----|-----|----|----|-----|----|------|----|---|------|----|--------|
| 0.5-10 | 54 | 50 | 34 | 8.5 | 5 | 13 | 47 | 5.5 | 42 | 10 | 13 | 3 | 8 | 9 | 8-M5 |
| 20-100 | 95 | 90 | 55 | 15 | 5.5 | 20 | 72 | 11 | 70 | 15.7 | 14 | 5 | 10.5 | 14 | 10-M10 |