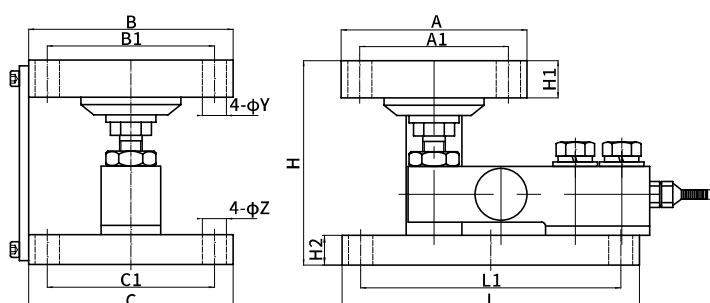


# DYMK-001 Weighing Modules



## Product Reviews

### Characteristic

The cantilever weighing module is combined and cantilever beam weighing sensor can be used a practical structure accessories, it is a combination of two boards, roof, substrate, plus the sensor, and support column and supporting bolts,

the characteristics of the weighing module is not limited by the site, general hopper scale are three corners or four corners, or the tank container on both sides, also not the area.

### Application Area

- It is used in large material tank, bin weighing, reaction kettle, hopper and vertical tank weighing application.

Parameters Table

Range	0-15T	Material quality	Alloy Steel
Output sensitivity	2.0±10%mv/v	Impedance	350Ω
Zero point output	±2%F.S.	Insulation resistance	≥5000MΩ/100VDC
Nolinear	0.1%F.S.	Service voltage	5-10v
Hysteresis	0.1%F.S.	Operating temperature range	-20-80℃
Repeatability	0.1%F.S.	Safe overload	120%
Creep (30 min)	0.05%F.S.	Extreme overload	150%
Temperature sensitivity drift	0.05%F.S./10℃	Cable line specifications	φ5x3m
Xero point temperature drift	0.05%F.S./10℃	Cable limit tension	10kg
Response frequency	10kHz	TEDS	

Range (T)	A	Al	B	B1	C	C1	L	L1	H	H1	H2	Y	Z
0.1-2	100	80	110	90	110	90	160	140	110	20	16	13	13
3-5	150	122	110	80	110	80	228	200	131	26.5	24.5	13	13
10-15	180	140	140	100	140	100	290	250	157.5	30	30	22	22