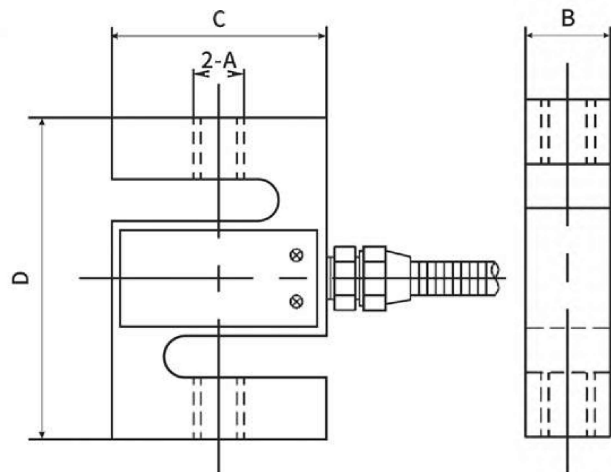


DYLY-103 S type load cells



Product Reviews

Characteristic

S-type is a common force sensor shape, characterized by simple structure, light weight, convenient installation, high precision, good linearity and high stability. Such sensors are commonly used to measure both light and moderate loads.

Application Area

- Machinery manufacturing industry: such as machine tool, pressure machine, injection molding machine, etc.
- Petrochemical industry: such as petroleum, chemical industry, coal gas, etc.
- Iron and steel metallurgy: such as iron and steel, metallurgy, casting, etc.
- Aerospace: such as aircraft, rockets, etc.

Parameters Table

Range	0-10T	Material quality	Alloy Steel	
Output sensitivity	2.0±10% mV/V	Impedance	350 Ω	
Zero point output	±1%F.S.	Insulation resistance	≥5000M Ω /100VDC	
Nolinear	0.03%F.S.	Service voltage	5-15V	
Hysteresis	0.03%F.S.	Operating temperature range	-20-80 $^{\circ}C$	
Repeatability	0.03%F.S.	Safe overload	150%	
Creep (30 min)	0.03%F.S.	Extreme overload	200%	
Temperature sensitivity drift	0.03%F.S./10 $^{\circ}C$	Cable line specifications	ϕ 5:0.2-1T/2m、2-5T/5m	
Xero point temperature drift	0.05%F.S./10 $^{\circ}C$	Cable limit tension	10kg	
Response frequency	10kHz	TEDS		

Range	A	B	C	D
2-50kg	M8x1.25	12.7	50.8	50.8
100-300kg	M12x1.75	19	50.8	50.8
500kg-1.5T	M12x1.75	25.4	50.8	50.8
2-5T	M18x1.5	25.4	76.2	76.2