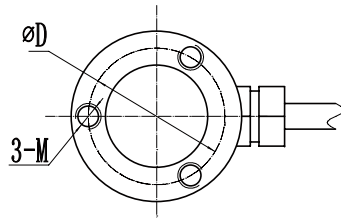
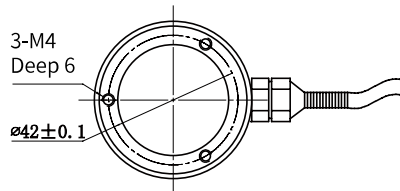
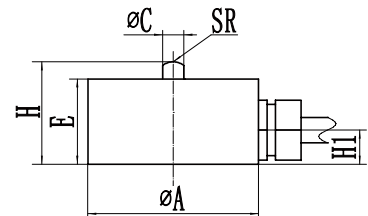


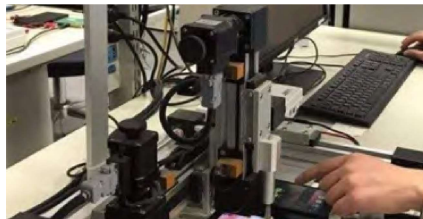
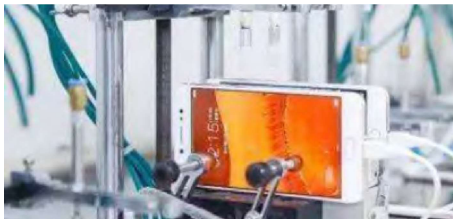
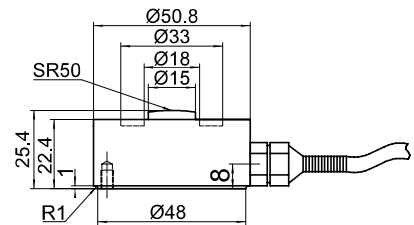
DYHW-116 Miniature load cells



Range: 3kg-5T



Range: 0-10T



Parameters Table

Range	0-10T	Material quality	Stainless Steel
Output sensitivity	1.0-2.0mV/V	Impedance	700/1000Ω
Zero point output	±1%F.S.	Insulation resistance	≥5000MΩ/100VDC
Nolinear	0.3%F.S.	Service voltage	5-10v
Hysteresis	0.3%F.S.	Operating temperature range	-20-80°C
Repeatability	0.3%F.S.	Safe overload	150%
Creep (30 min)	0.1%F.S.	Extreme overload	200%
Temperature sensitivity drift	0.3%F.S./10°C	Cable line specifications	φ3x2m φ5x2m (10t)
Xero point temperature drift	0.3%F.S./10°C	Cable limit tension	10kg
Response frequency	10kHz	TEDS	Selectable

Range	ΦA	ΦC	ΦD	H	E	M	H1	SR
3-200kg	20	2.5	15.5	12	10	M3	4	2
300-500kg	26	5	18.5	15	11.5	M4	5	6
1-2T	26	5	18.5	15	12.5	M4	5.5	20
3-5T	37.7	10.8	31	15.5	14	M2.5	4	50