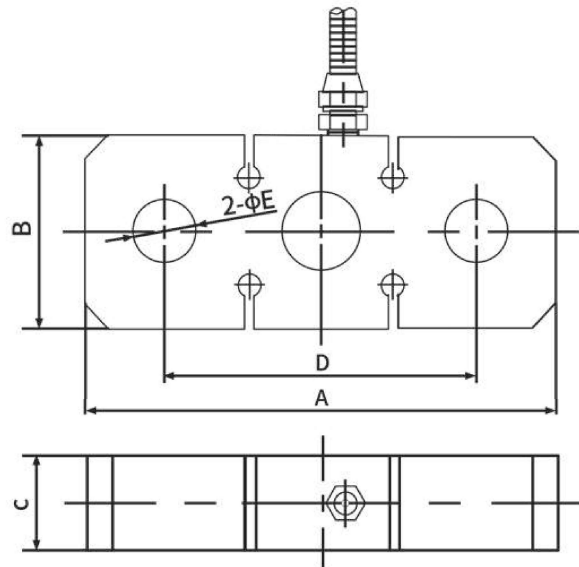


DYBH-101 Shear beam load cells



Product Reviews

Characteristic

The cantilever beam weighing sensor is also known as the shear beam weighing sensor. It has the characteristics of simple structure, convenient installation, reliable use, long service life, and high cost-effectiveness.

Application Area

- Automobile scale and main laying axle load gauge in highway weighing equipment
- Small scale and platform scales, steel cylinder scales, and other fields in industrial scales
- Generally, three or four sensors are used as a group

Parameters Table

Range	100T	Material quality	Alloy Steel
Output sensitivity	2.0±0.05mV/V	Impedance	350Ω
Zero point output	±1%F.S.	Insulation resistance	≥5000MΩ/100VDC
Nolinear	0.3%F.S.	Service voltage	5-15v
Hysteresis	0.3%F.S.	Operating temperature range	-20-60°C
Repeatability	0.1F.S.	Safe overload	150%
Creep (30 min)	0.1%F.S.	Extreme overload	300%
Temperature sensitivity drift	0.05%F.S./10°C	Cable line specifications	φ5x3m
Xero point temperature drift	0.05%F.S./10°C	Cable limit tension	10kg
Response frequency	10kHz	TEDS	

Range (T)	A	B	C	D	2-ΦE	Uncharge (US Crosby)
1-3	196	80	30	130	26	G213-6.5T
5-8	196	80	40	130	29	G213-8.5T
10-12	260	100	45	170	36	G213-12.5T
15-25	260	100	50	170	52	G213-25T
30-50	360	120	65	230	72	S09-55T
100	570	170	85	360	98	G2130-120T