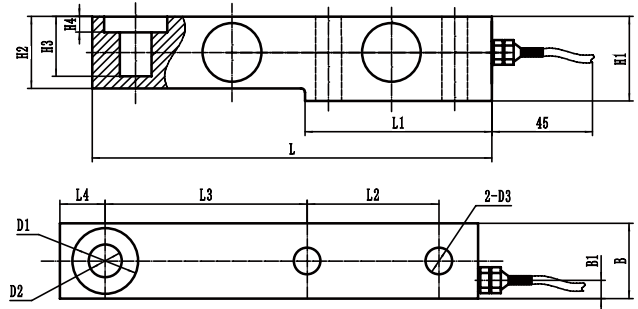


DYX-302 Shear beam load cells



Product Reviews

Characteristic

The cantilever beam weighing sensor is also known as the shear beam weighing sensor. It has the characteristics of simple structure, convenient installation, reliable use, long service life, and high cost-effectiveness.

Application Area

- Automobile scale and main laying axle load gauge in highway weighing equipment
- Small scale and platform scales, steel cylinder scales, and other fields in industrial scales
- Generally, three or four sensors are used as a group

Parameters Table

Range	0-10T	Material quality	Alloy steel / stainless steel
Output sensitivity	2.0±0.02mV/V	Impedance	350Ω
Zero point output	±1%F.S.	Insulation resistance	≥5000MΩ/100VDC
Nolinear	0.03%F.S.	Service voltage	5-10V
Hysteresis	0.03%F.S.	Operating temperature range	-20-80°C
Repeatability	0.02%F.S.	Safe overload	150%
Creep (30 min)	0.02%F.S.	Extreme overload	300%
Temperature sensitivity drift	0.03%F.S./10°C	Cable line specifications	φ5x5m
Xero point temperature drift	0.03%F.S./10°C	Cable limit tension	10kg
Response frequency	10kHz	TEDS	Selectable

Range (T)	L	L1	L2	L3	L4	H1	H2/B	B1	H3	H4	D1	D2	D3
0.5-2	203	95	26	22	98	43	36.6	7	30.5	8	φ32	φ16	φ13
3	203	95	26	22	98	43	36.6	7	30.5	8	φ32	φ16	φ15
5-7.5-8	235	110	26	22	124	52	48	7	30	12	φ38	φ22	φ21